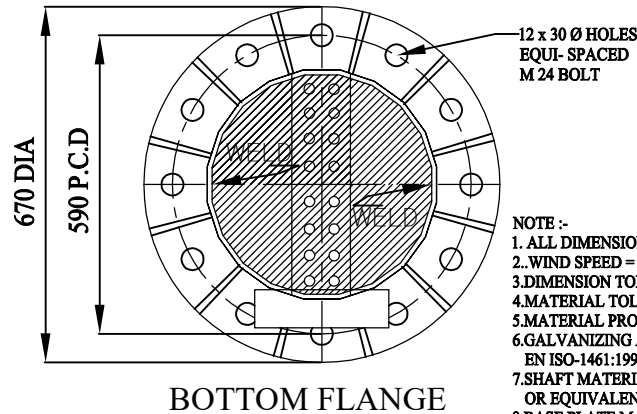
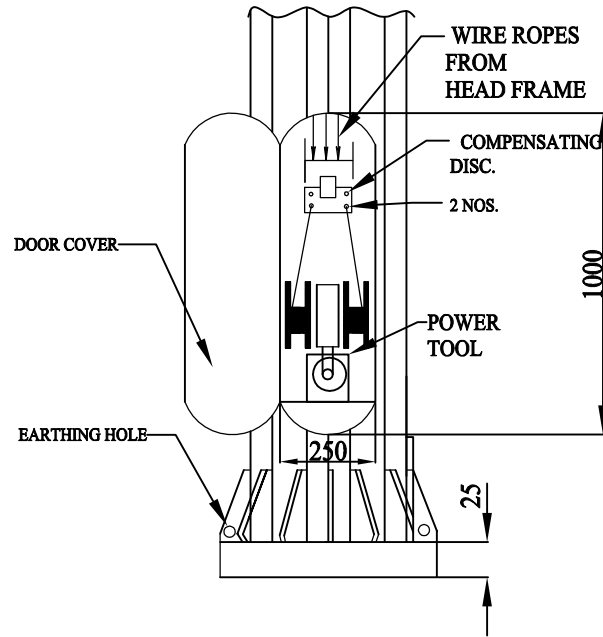
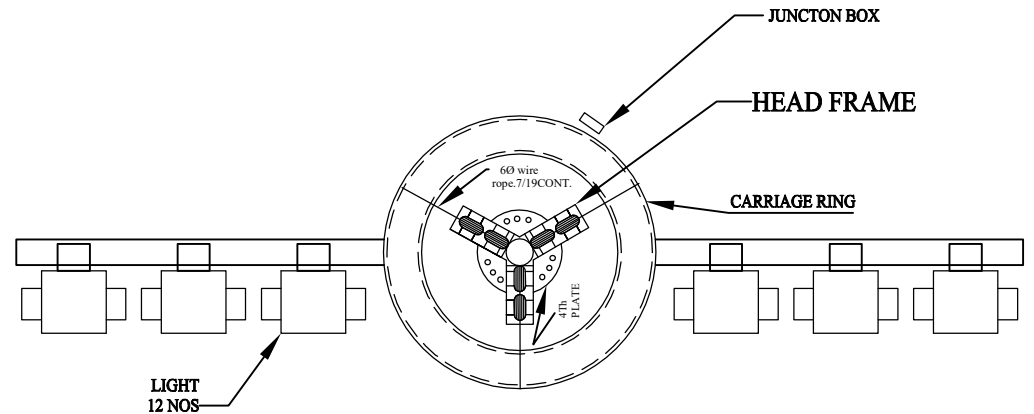
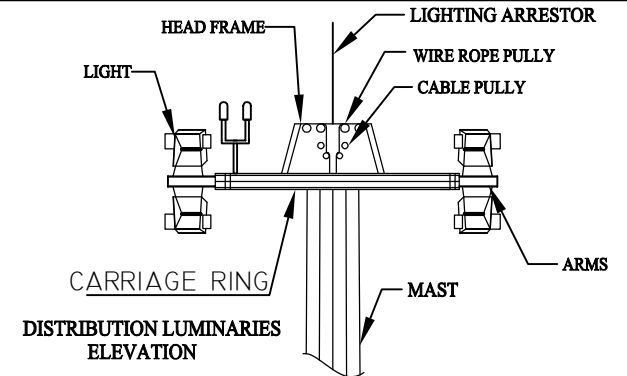


MAIN SHAFT
20 SIDES POLYGONAL SECTION
TOP DIA = 150
BOTTOM DIA = 450



- NOTE :-
1. ALL DIMENSION ARE IN MM.
2. WIND SPEED = 50 M / SEC.
3. DIMENSION TOLERANCE BSEN 40
4. MATERIAL TOLERANCE IS 1852-1985
5. MATERIAL PROTECTION = HOT DIP GALVANIZED
6. GALVANIZING AND FINISHING STANDERD EN ISO-1461:1999 AND IS 11759-1985.
7. SHAFT MATERIAL CONSTRCION AS PER BSEN 10025 OR EQUIVALENT.
8. BASE PLATE MATERIAL AS PER IS 2062.



NAGAR PARISHAD • HILSA •		NAME	DATE
		DESIGN	
TITLE :- LIGHTING MAST (SEC-2) 16 MTRS. NO. OF LUMANARIES= 12 NOS.		DRN.	06.01.25
		CHKD.	
		NP	
SCALE:	N.T.S	REV. NO.	
DRN NO :- NP-HM-16M-2-450-150			