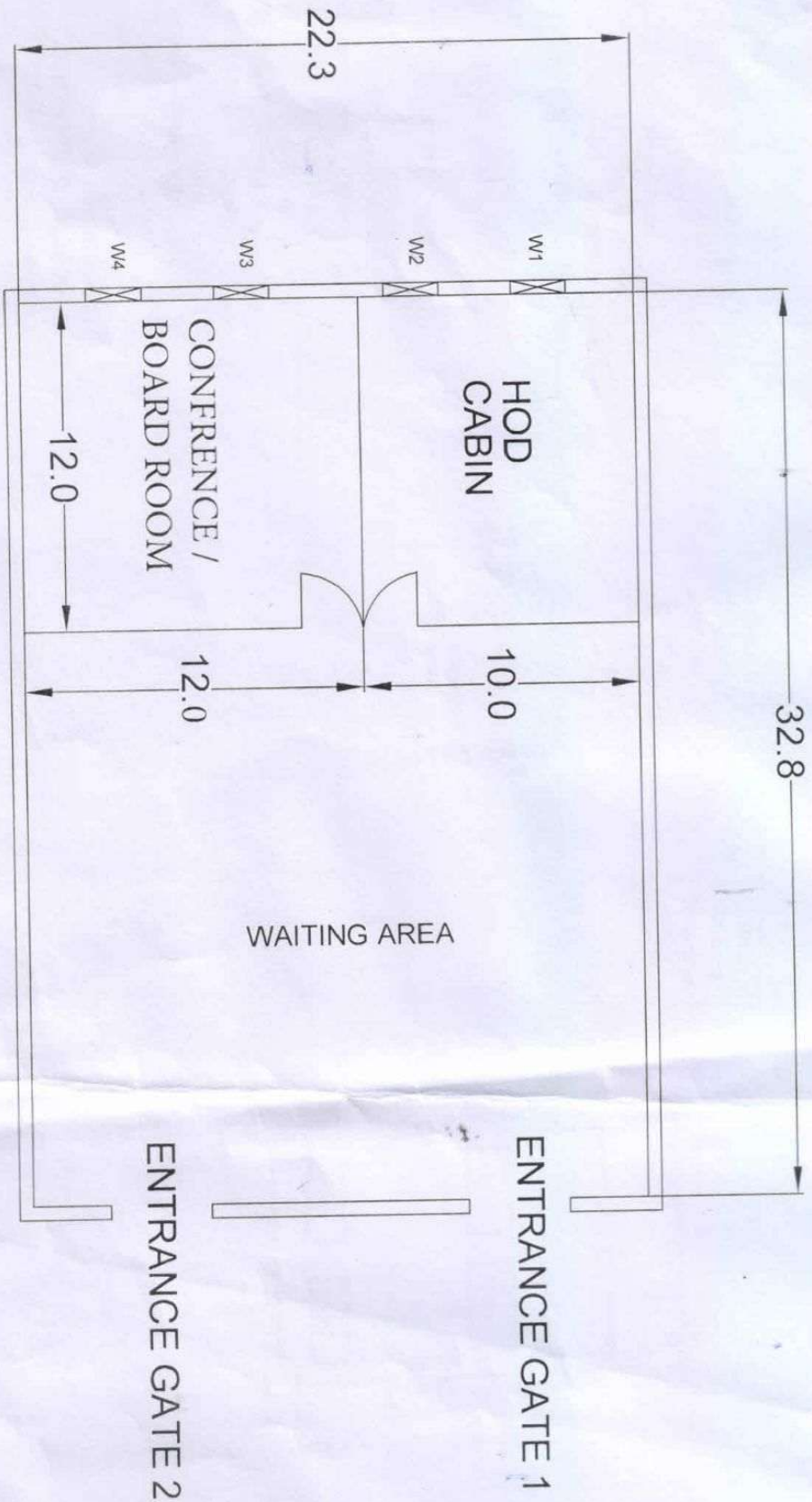


Technical Specifications

<u>S.No</u>	<u>Description of Work Approx. Qty. (in Sq.Feet)</u>	<u>Department</u>	<u>Description of Work Approx. Qty. (in Sq.Feet)</u>	<u>Rate(Rs.)/ sq Feet</u>	<u>Total Amount (Inclusive of all)</u>
1.	<p>Aluminum Powder Coated 63.5mm x 38.1mm x 1.6mm 4mm Float Glass in the middle portion 9mm BSL particle Board in the Bottom & Top side</p> <p>Height of Partition-13.8Feet</p> <p>Area as per below:</p> <ul style="list-style-type: none"> • 30x13.8 -01 No's • 29.6x13.8 -01 No's • 36.1x13.8 -01 No's • 29.8x13.8 -01 No's • 28.3x13.8 -03 No's • 32.2x15.7 -01 No's <p>Glass portion height -06feet Bottom portion height -04feet Top portion as per balance Colour Black/Brown Swing Double door-05 No's with 6feet each long and 10feet height, fitted with automatic door closure & Stopper open able at both sides. Doors fitted with 2lever locks</p>	Toolroom	3409.0 sq Feet		
2.	<p>Aluminum Powder Coated 63.5mm x 38.1mm x 1.6mm</p> <p>Height-21feet</p> <p>Area to be covered 5.9x21feet Colour Black/Brown Swing Single door-02 No's with 3feet each long and 6feet height, fitted with with automatic door & Stopper open able at one side</p>	Processing	123.9 sq Feet		
3.	<p>Aluminum Powder Coated 63.5mm x 38.1mm x 1.6mm 9mm BSL particle Board in the Bottom & Top side, with automatic door closer</p> <p>Height-4.0feet Colour Black/Brown Area to be covered 10x4.0Feet</p>	Principle cabin outside	40.0 sq Feet		

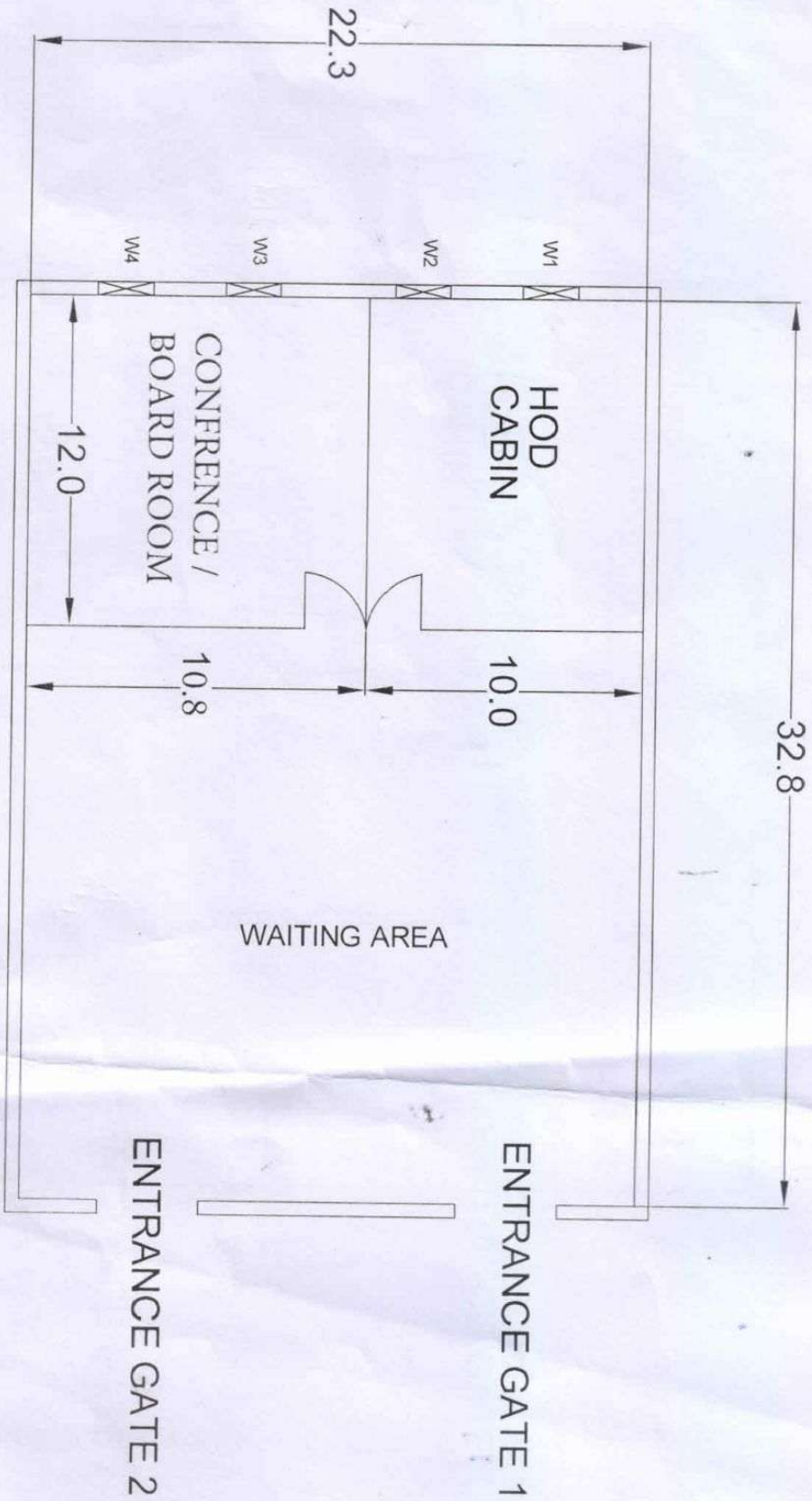
4.	<p>Aluminum Powder Coated 63.5mm x 38.1mm x 1.6mm 4mm Float Glass in the middle portion 9mm BSL particle Board in the Bottom & Top side</p> <p>Height of Partition- 09Feet Glass portion height -04 feet Bottom portion height -3.5feet Top portion as per balance</p> <p>Colour Black/Brown</p> <p>Area as per below:</p> <ul style="list-style-type: none"> • 12x09 Feet • 10x09 feet • 12x09 feet <p>Swing Single door-02 No's with 3feet with automatic door closer each long and 6feet height, fitted with door closure& Stopper open able at one side</p>	VTC/STC	306.0 sq Feet		
5.	<p>Aluminum Powder Coated 63.5mm x 38.1mm x 1.6mm 4mm Float Glass in the middle portion 9mm BSL particle Board in the Bottom & Top side</p> <p>Height of Partition- 09Feet Glass portion height -04 feet Bottom portion height -3.5feet Top portion as per balance</p> <p>Colour Black/brown</p> <p>Area as per below:</p> <ul style="list-style-type: none"> • 12.0x09 Feet • 10.4x09 feet • 10.4x09 feet <p>Swing Single door-02 No's with 3feet each long and 6feet height, fitted with automatic door closer & Stopper open able at one side</p>	LTC	295.2 sq feet		

Total-4174.0 sq feet (Approx)



STC/VTC DEPARTMENT
TOTAL PARTITION SQ. FEET (12X9)+(22.0 X9)=306
Height - 9 feet

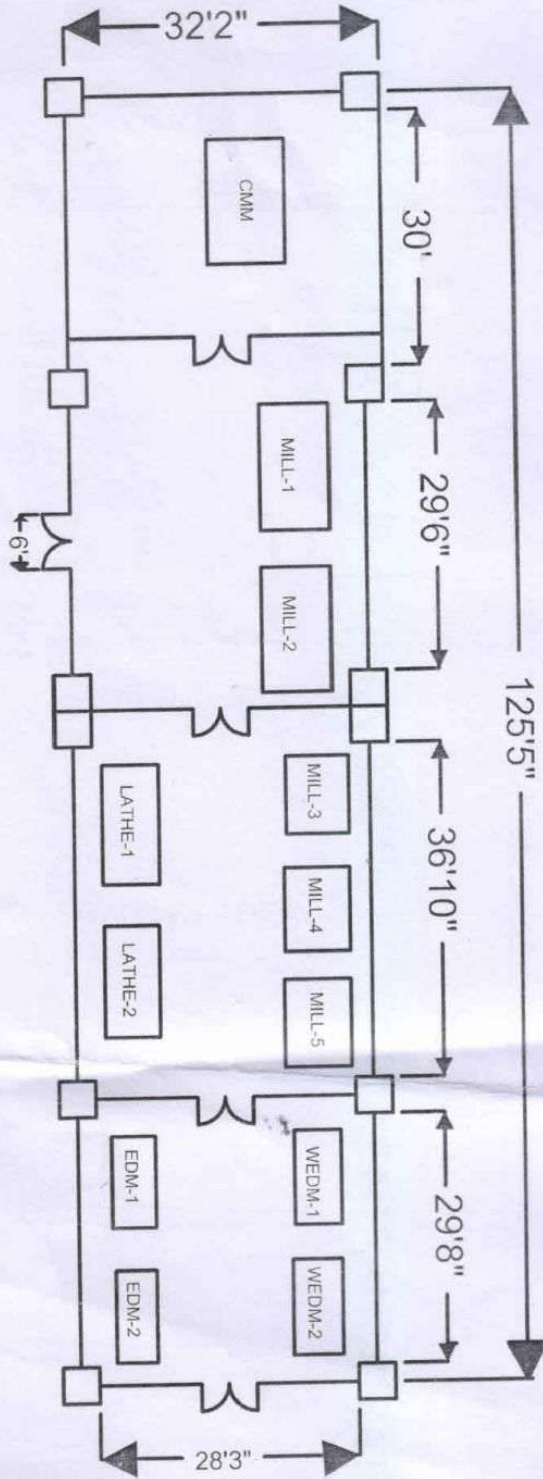
(Signature)
(Approx.)



LTC DEPARTMENT
TOTAL PARTITION SQ. FEET $(12 \times 9) + (20.8 \times 9) = 295.2$ (Approx.)
Height - 9 feet

Praveen

K. Suresh



TOOLROOM AREA :- TOTAL PARTITION SQ. FEET = 3400 (Approx)
NOTE :- The door with door closure & stopper & operable at both sides.

Design/Drawn by