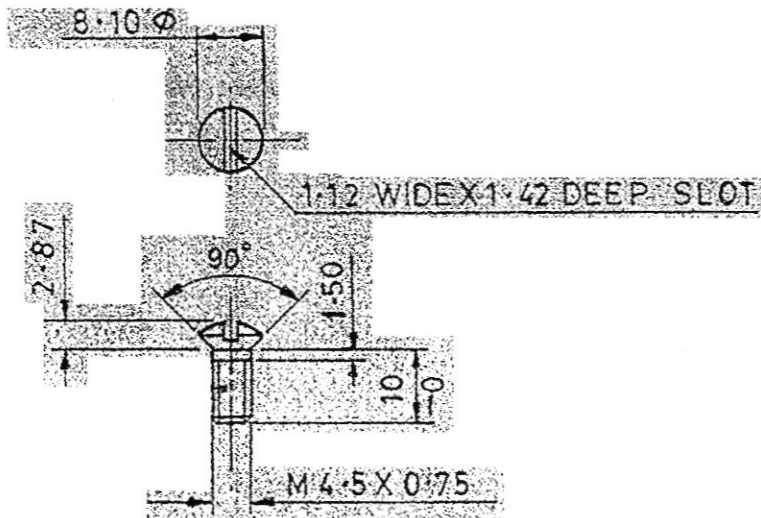


5305-005010

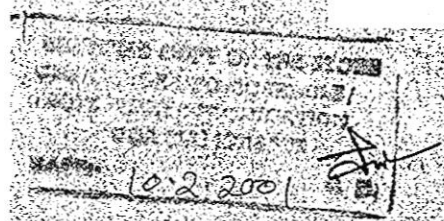
ON DIMNS. ARE IN mm



FOR EXPLANATION OF DIMENSIONING ETC, SEE ARDE NOTE SHEET NO. 1.

METRIC

UNCONTROLLED COPY
 CERTIFIED CORRECT COPY OF APPROVED
 DRAWINGS AT THIS DATE: 12/11/24
 DESIGN & DRAWING OFFICE,
 ORDNANCE FACTORY, TIRUCHIRAPPALLI - 620 016.



04.05.17 | 27067-SA | MATL. AMENDED 12.08.17

06-04-99	24315-SA	PROFORMA CHANGED, NEG. RE-TRACED & DRG. RE-SEALED.		<i>Aud</i>	<i>B...</i>
		PREVIOUS D. C. NOS. 11012-SA, 11238-SA, 14414-SA, 15746-SA, 17381-SA, 21975-SA, 22759-SA & 22998-SA.		COPY	COPY
DATE	AUTHY.	BRIEF RECORD	ZONE	I/C, D.O.	G.O.
SEALED: D.C. 17381-SA, DT. 2.12.82				SIGN.	

DRN:	CHD.	TRD. <i>Shanda</i>	COMP. <i>M. Banu</i>	AHSP CQA(SA), ICHAPUR	
SCALE:- 1:1		EST. MASS.		1005-004057, 1005-004025	
DT. 6-4-99	<i>Aud</i>	APPROVED DT.	NEG. RE-TRACED	ASSY. & 1005-004059	
MATERIAL:- STEEL BS: 970 Pt. 1: 1983 Gr. 070 M-20					
IS: 513-2008 DESIGN CR2			DGNR'S REF. CIA/WPN 541		
H.T./HARDNESS:-			2 SHTS. SHT. No. 2		
PROTECTIVE PHOSPHATE TO SPECN. JSS: 0465-01:1988			PART NO.		
FINISH:- CLASS-II (ACCELERATED), OIL FINISH.			DRG. NO.		
NOMENCLATURE:- SCREW			D.S. CAT. NO. 5305-005010		

3/11

3

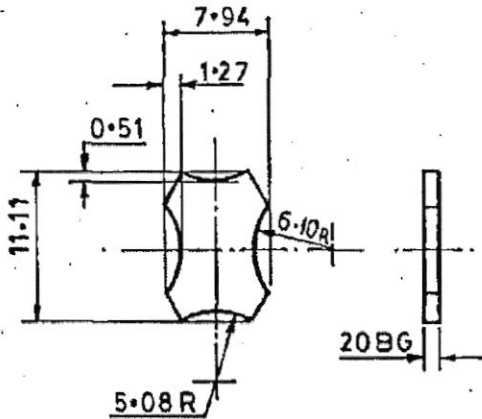
799100-9001

ON D.S. CAT.

FOR EXPLANATION SEE D.D. NOTE SHEET NO. 3
DIMNS. ARE IN mm

NOTE

WHERE TOLERANCES ARE NOT SHOWN
DIMENSIONS IN WHOLE NUMBER ± 0.27 mm
DIMENSIONS WITH ONE DECIMAL
PLACE ± 0.4 mm.
DIMENSIONS WITH TWO DECIMAL
PLACES ± 0.13 mm.



UNCONTROLLED COPY
CERTIFIED CORRECT COPY OF APPROVED
DRAWINGS AT THIS DATE: 12/11/24
DESIGN & DRAWING OFFICE,
ORDNANCE FACTORY, TIRUCHIRAPPALLI - 620 016.

METRIC

NSN: B1/1005-72-0000664

4/11

ICR 1224

C	06-9-16	26932-SA	MATERIAL AMENDED		
	05-06-10	26509-SA	NSN ADDED		
	01-10-99	24540-SA	PROFORMA CHANGED, PROTECTIVE FINISH AMENDED, NEG. RE-TRACED & DRG. RE-SEALED PREVIOUS D.C. NOS. 11237-SA, 11270-SA & 17697-SA.		
	DATE	AUTHY.	BRIEF RECORD	ZONE	I/C; D.O G.O
	SEALED :- D.C. NO. 11237-SA, DT. 17-4-72			SIGN.	
	DRN.	CHD.	TRD. <i>SK. Bhoosh.</i>	COMP. <i>M. Banerji</i>	AHSP CQA(SA) ICHAPUR
	SCALE :- NOT TO SCALE		EST. MASS		
	DT. 01-10-99	<i>Aula</i>	APPROVED DT. 19.6.67.	NEG. RE-TRACED	ASSY. 1005-001594, 1005-001595, 1005-001596, 1005-004057, 1005-004025, 1005-004059
	MATERIAL :- IS: 513-2008 DESIGNATION CR3				
D	H.T/HARDNESS :-			DG NR'S	REF. ARDE 657/149
	PROTECTIVE FINISH :- PHOSPHATE TO SPECN JSS:0465-01:1988 CLASS 1 SPIRIT STAIN BLACK OIL FINISH			PART NO.	
	NOMENCLATURE :- PLATE BRACKET SLING			DRG. NO.	
				D.S. CAT. 1005-001664 NO.	

64 RB

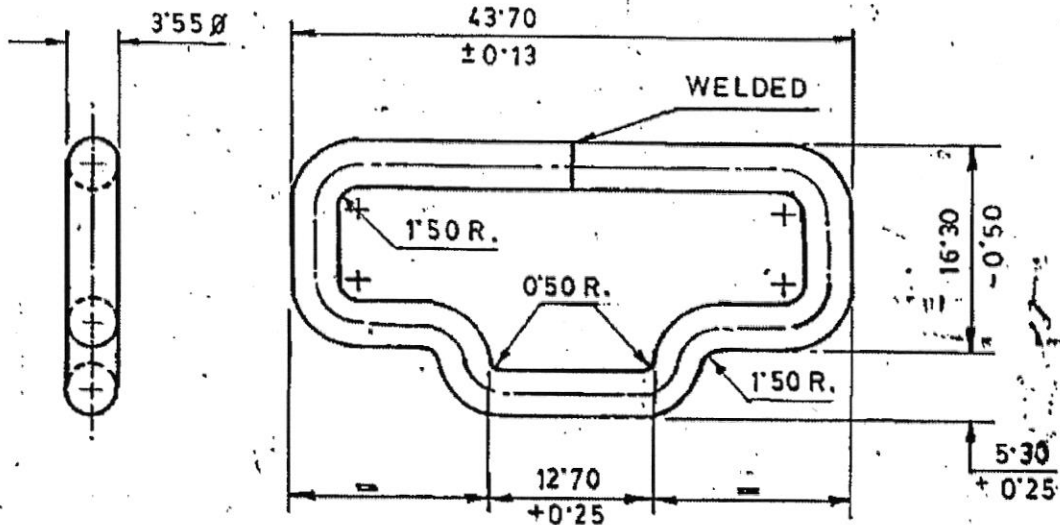
260910-07ES

ON DIMNS. ARE IN mm.

FOR EXPLANATION OF DETAILS WHEREVER NOT SPECIFIED, REFER D.D.NOTE. SHEET NO.3 (LATEST ISSUE)

UNCONTROLLED COPY
 CERTIFIED CORRECT COPY OF APPROVED
 DRAWINGS AT THIS DATE: 12/11/24.
 DESIGN & DRAWING OFFICE,
 ORDNANCE FACTORY, TIRUCHIRAPPALLI - 620 016.

ALTERNATIVE: - LOOP SLING REAR
 (D.S.CAT. NO. 5340-015579)
 TO BE USED WITH SLING ASSEMBLY
 (D.S.CAT. NO. 1005-007815)



5/11 ICR 1237

03.07.17	27109-SA	MATERIAL AMENDED.			
17.03.17	27038-SA	MATERIAL AMENDED.			
6-5-08	26414-SA	USE DELETED.	A/3,4	Act co.	102-350
2-1-08	26390-SA	ALTERNATIVE USE ADDED.	A/3,4	Act co.	102-350
12.04.2003	25719-SA	PROFORMA CHANGED, TOL.NOTE & PROTECTIVE FINISH AMENDED, NEG.RE-TRACED AND DRG-RE-SEALED.		Act co.	102-350
		PREVIOUS D.C.NOS.14418-SA,14620-SA,17381-SA,19812-SA, 20430-SA, 22614-SA, 25082-SA		Act co.	102-350
DATE	AUTHY.	BRIEF RECORD	ZONE	COPY.	COPY.

SEALED: - D.C.NO-17381 SA.DT.2.12.82. SIGN.

DRN.	CHD.	TRD. <i>RS</i>	COMP. <i>Yogavani</i>	AHSP. CQA(SA), ICHAPUR
SCALE: - 2:1		EST. MASS: -		ASSY. 1005-001594, 1005-001595, 1005-001596
DT. 12.04.2003.	<i>Act</i> I/C.D.O.	APPROVED (NEG.RE-TRACED)	DT. 22.5.75.	

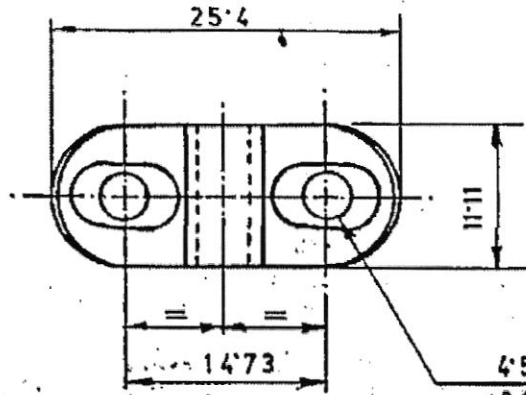
D MATERIAL: - IS: 280-2006, 1/4 HARD.	
H.T./ HARDNESS: -	DG NR'S REF. CISA-434
PROTECTIVE FINISH: - PHOSPHATE TO SPECN.JSS:0465:01-1994 CLASS I PAINT REF. STOVING BLACK TO SPECN.JSS:8010-37.	PART NO.
	DRG.NO.
NOMENCLATURE: - LOOP SLING REAR (NO.1)	D.S.CAT. I NO. 5340-016097

167910-04ES

D.S.CAT. NO.

DIMNS. ARE IN mm.

FOR EXPLANATION OF DETAILS WHEREVER NOT SPECIFIED REFER D.D. NOTE. SHEET. NO.3.(LATEST ISSUE)



4.57 Ø HOLES DRILLED
+0.13 AND C'SK AT 90°

UNCONTROLLED COPY
CERTIFIED CORRECT COPY OF APPROVED
DRAWINGS AT THIS DATE: 12/11/24

DESIGN & DRAWING OFFICE,
ORDNANCE FACTORY, TIRUCHIRAPPALLI-620 016.

METRIC

ICR 1212

6/11

NSN: BI/5340-72-0000297

02.09.16	26928-SA	MATERIAL AMENDED.		
30-7-10	26532-SA	NSN ADDED.		
28-12-2004	26027-SA	PROFORMA CHANGED, TOL. NOTE & PROTECTIVE FINISH AMENDED, NEG. RE-TRACED AND DRG. RE-SEALED.		
		PREVIOUS D.C. NOS. 11237-SA, 11270-SA, 16355-SA, 20986-SA, 22676-SA AND 23388-SA		
DATE	AUTHY.	BRIEF RECORD	ZONE	I/C.D.O. G.O.

SEALED: - D.C. NO. 11237-SA, DT. 17.4.72.

DRN. CHD. TRD. *AS* COMP. *Asperawi*

SCALE: -2:1 EST. MASS: - AHSP CQA(SA), ICHAPUR

DT. 28-12-2004 I/C.D.O. APPROVED, DT. 19.6.67 (NEG. RE-TRACED) ASSY. 1005-001594, 1005-001595, 1005-001596, 1005-004057, 1005-004025, 1005-004059

MATERIAL: - IS: 513-2008 DESIGNATION CR2 CONDITION ANNEALED.

H.T./HARDNESS: - DGNR'S REF. ARDE 657/32

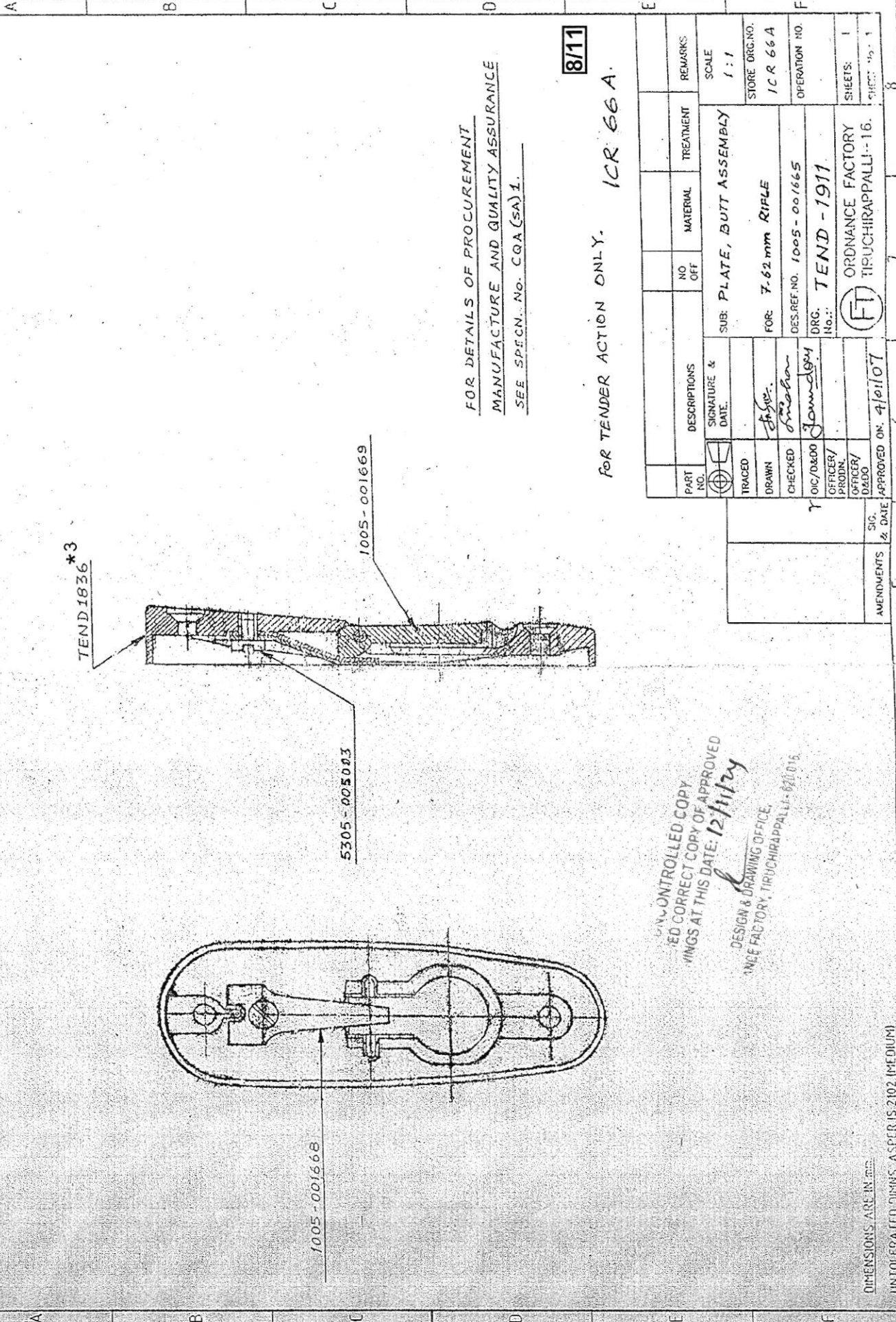
PROTECTIVE FINISH: - PHOSPHATE TO SPECN. JSS. 0465/01:1994 CLASS-I, SPIRIT STAIN BLACK OIL FINISH. PART NO. DRG. NO.

NOMENCLATURE: - BRACKET SLING D.S.CAT. NO. 5340-015297

CU RB SCAN

DRG. NO. TEND-1911

FOR EXPLANATION OF DIMENSIONING, ETC.
SEE ART. NOTE SHEET NO. 1 (LATEST ISSUE)



FOR DETAILS OF PROCUREMENT
MANUFACTURE AND QUALITY ASSURANCE
SEE SPECN. NO. CGA (SA) 1.

FOR TENDER ACTION ONLY. ICR 66 A. **8/11**

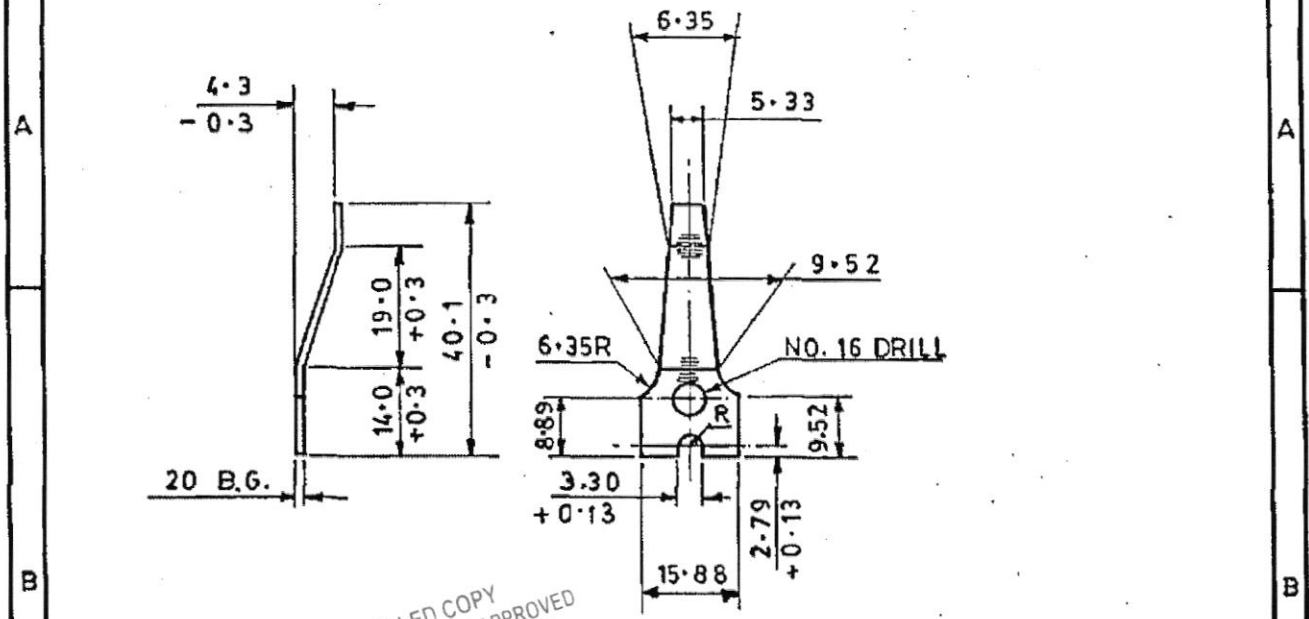
UNCONTROLLED COPY
NOT A CORRECT COPY OF APPROVED
DRAWINGS AT THIS DATE: 12/11/74
DESIGN & DRAWING OFFICE,
ORDNANCE FACTORY, TIRUCHIRAPPALLI-620 016.

PART NO.	DESCRIPTIONS	NO. OFF.	MATERIAL	TREATMENT	REMARKS
TRACED	SIGNATURE & DATE				SCALE 1:1
DRAWN	<i>Shw.</i>				STORE ORG. NO. ICR 66 A
CHECKED	<i>Director</i>				OPERATION NO.
DIC/D&DO	<i>Jawadhy</i>				
OFFICER/PRODN.					
OFFICER/D&DO					
APPROVED ON: 4/9/107					
AMENDMENTS & DATE					
		SUB: PLATE, BUTT ASSEMBLY		FOR: 7.62 mm RIFLE	
		DES. REF. NO. 1005-001665		DRG. No.: TEND-1911	
		ORDNANCE FACTORY		TIRUCHIRAPPALLI-16.	
		SHEETS: 1		SHEET: 1 of 1	

DIMENSIONS ARE IN mm.
UNTOLERATED DIMS. AS PER IS: 2102 (MEDIUM)

1 2 3 4
 899100-9001 ON
 D.S.CAT DIMNS. ARE IN m.m.

FOR EXPLANATION OF DIMENSIONING ETC. SEE; ARDE NOTE SHT. NO.1

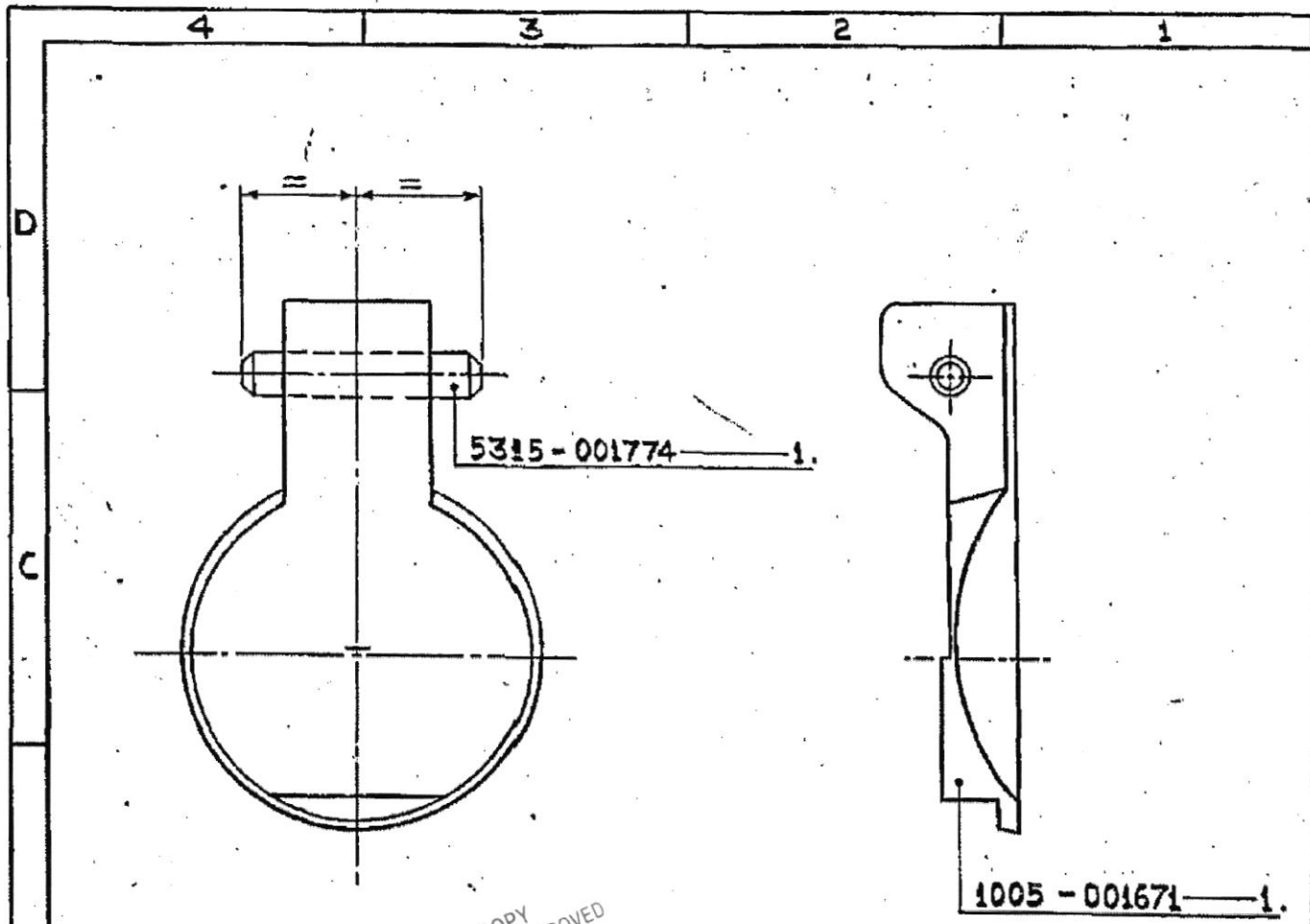


UNCONTROLLED COPY
 CERTIFIED CORRECT COPY OF APPROVED
 DRAWINGS AT THIS DATE: 12/11/24
 DESIGN & DRAWING OFFICE,
 ORDNANCE FACTORY, TIRUCHIRAPPALLI-620 016.

METRIC
 NSTN:1005-72-0000668

ICR 1260

06-9-16	26932-SA	MATERIAL AMENDED			
05-08-10	26509-SA	NSN ADDED			
28-2-2000	24643-SA	PROFORMA CHANGED, NEG. RE-TRACED AND DRG. RE-SEALED.			
		PREVIOUS D.C. NOS. 10448-SA, 11001-SA, 11267 SA, 21937-SA & 23193-SA.			COPY
DATE	AUTHY.	BRIEF RECORD	ZONE	I/C.D.O.	G.O.
SEALED :- D.C. NO. 10448-SA, DT. 13.4.70					SIGN.
DRN.	CHD.	TRD. <i>Sul</i>	COMP. <i>W</i>	AHSP CQA(SA) ICHAPUR	
SCALE :- 1:1		EST. MASS		ASSY. 1005-001665	
DT. 28-2-2000	<i>Sul</i> I/C: D.O.	APPROVED	DT. 19. 6. 67	DGNR'S REF. ARDE 657/228	
MATERIAL :- IS:2507:1975. GR 3 DESIGNATION 70C6					
H.T/HARDNESS :- HARDENED & TEMPERED TO A H.V. OF 425 TO 500			PART NO.		
PROTECTIVE PHOSPHATE TO SPECN. JSS:0465-01-1988 CLASS 1, OIL FINISH.			DRG. NO.		
NOMENCLATURE :- <u>SPRING TRAP</u>			D.S.CAT. 1005-001668 NO.		



UNCONTROLLED COPY
 CERTIFIED CORRECT COPY OF APPROVED
 DRAWINGS AT THIS DATE: 12/11/24
 DESIGN & DRAWING OFFICE,
 ORDNANCE FACTORY, TIRUCHIRAPPALLI - 620 016.

AS AN ALTERNATIVE METHOD OF MANUFACTURE
 PIN TRAP 5315-001774 & TRAP 1005-001671
 MAY BE DIE-CAST TOGETHER AS INTEGRAL.
 NSN: B1/1005-72-0000669

ICR 74 SA

METRIC

26525 -SA	19.7.1	NSN ADDED	<input checked="" type="checkbox"/>
20986 -SA	8.11.90	CLOTH NEG. RETRACED & DRG. RE-SEALED	SSO <input checked="" type="checkbox"/>
		PREVIOUS D.C.(I) NOS. 10448-SA, 10669-SA, 11055-SA & 15653-SA.	COPY
AUTHY.	DATE	ZONE	BRIEF RECORD SIG.

DGN.	DATE	NAME	ASSY. DRG. NO.
DRN.			1005-001669
CHD.			MATERIAL :-
TRD.	13.9.90	S. Shankar	DIMENSIONS ARE IN MILLIMETRES
COMP.	18.9.90	Rondal	
I/C: D.O.			
SCALE :-			
SEALED :- D.C.(I)			
10448-SA, DT. 13.4.70			

CQA(SA) ICHAPUR
APPROVED. DT. 19.6.67
CL. NEG. RE-TRACED DESIGNER'S REF. CIA/WPN/224/1
DS. CAT. NO. 1005-001669

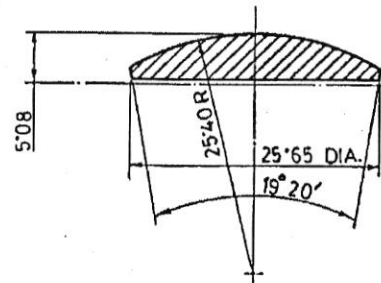
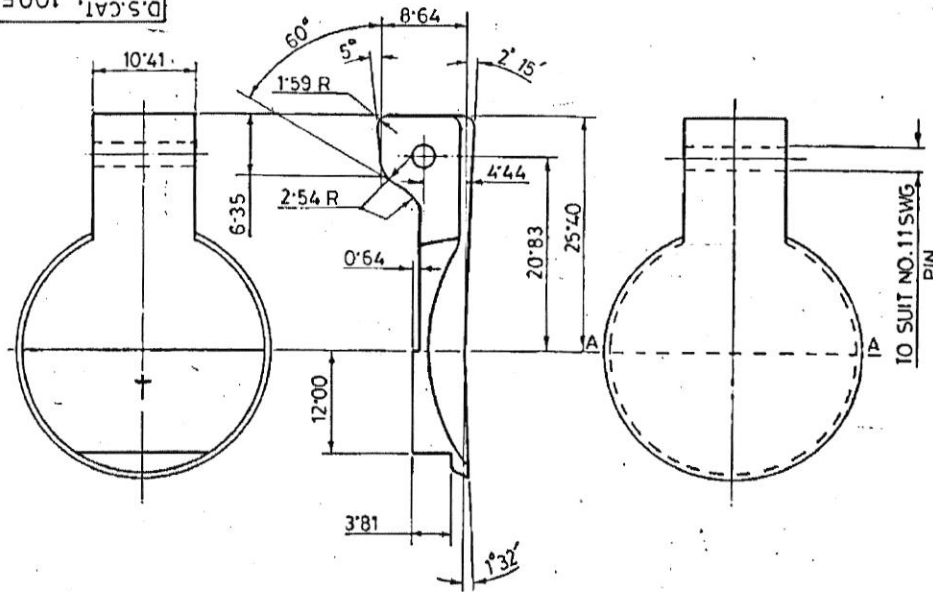
**TRAP. BUTT
PLATE**

D.S.CAT. NO. 1005-001671

DIMNS. ARE IN mm.

FOR EXPLANATION OF DIMENSIONING ETC. SEE D.D NOTE SHEET NO.3.(LATEST ISSUE)

D.S.CAT.NO. & CONTRACTOR'S CODE MARK TO BE MARKED IN 3 FIGURES IN RAISED LETTERS.



SECTION - A-A

UNCONTROLLED COPY
 CERTIFIED CORRECT COPY APPROVED
 DRAWINGS AT THIS DATE: 12/11/24
 DESIGN & DRAWING OFFICE,
 ORDNANCE FACTORY, TIRUCHIRAPPALLI-620 016.

ICR 1336

NSN:B1/1005-72-0000671

15.09.16	26941-SA	MATERIAL AMENDED			DRN.	CHD.	TRD. <i>Aras</i>	COMP. <i>Mantri</i>	AHSP CQA(SA)ICHAPUR
06-07-10	26518-SA	NSN ADDED			SCALE: 2:1		EST. MASS.		ASSY. 1005-001669
29-2-2000	24644-SA	PROFORMA CHANGED, NEG.RE-TRACED AND DRG, RE-SEALED.			DI. 29-2-2000	<i>Aras</i>	APPROVED DT. 10-4-70	NEG. RE-TRACED	
		PREVIOUS D.C.NOS.10448-SA,10669-SA,11001-SA,11267-SA,18008-SA,18099-SA,22551-SA.				IC; DO			DGNR'S REF. ARDE 657/230
DATE	AUTHY.	BRIEF RECORD	ZONE	IC;D.O.	G.O.	HT/HARDNESS:-			PART NO.
SEALED:-D.C. NO. 10448 - SA, DT. 13-4-70				SIGN.		PROTECTIVE FINISH:-			DRG. NO.
NOMENCLATURE		TRAP							D.S.CAT. NO. 1005-001671

000900-9089

ON
D.S.CAT

DRAWING CONVENTIONS CONFORM TO JSG-0104

DIMNS. ARE IN m.m.

GEN. TOL. 'MEDIUM' IS: 2102

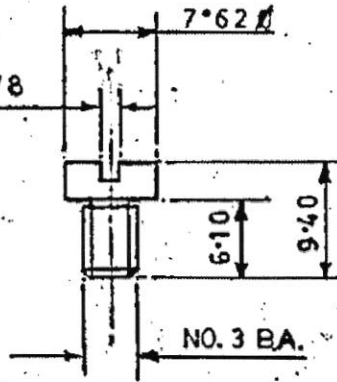
A

B

A

B

1.27 WIDE X 1.78
DEEP SLOT



UNCONTROLLED COPY
CERTIFIED CORRECT COPY APPROVED
DRAWINGS AT THIS DATE: 12/11/24
DESIGN & DRAWING OFFICE,
ORDNANCE FACTORY, TIRUCHIRAPPALLI - 620 016.

NOTE:-
FOR SPECN. LATEST ISSUE SHOULD
BE FOLLOWED.

METRIC

NSN: 5305-72-0001003

ICR 1523

01.09.16	26925-SA	MATERIAL AMENDED.		
05.06.10	26509-SA	NSN ADDED		
16.11.98	24211-SA.	PROFORMA CHANGED, EXPLANATION NOTE DELETED, CONVENTION & TOL. NOTE ADDED, NEG. RE-TRACED AND DRG. RE-SEALED.		
		PREVIOUS D.C.NOS. 10448-SA, 10569-SA, 11001-SA, 11267-SA, 15580-SA, 16080-SA, 19634-SA, 22648-SA, 22662-SA, 23193-SA.		
DATE	AUTHY.	BRIEF RECORD	ZONE	I/C, D.O. G.O.
SEALED:- D.C.NO. 10448-SA, DT 13.4.70			SIGN.	
DRN.	CHD.	TRD. <i>Handwritten</i> COMP. <i>Handwritten</i>	AHSP. CQA(SA)ICHAPUR	
SCALE:- 2:1		EST. & MASS:-	ASSY. 1005-001665	
DT. 16-11-98	<i>Handwritten</i> I/C, D.O.	APPROVED. DT. 19.6.67 NEG. RE-TRACED.		
MATERIAL:- IS: 5517-1993 DESIGNATION 40 CB.				
HT/HARDNESS:-			DGNRS REF. CISA/85	
PROTECTIVE PHOSPHATE TO SPECN. JSS: 0465-01:1988			PART NO.	
FINISH:- CLASS-I, OIL FINISH.			DRG. NO.	
NOMENCLATURE:- SCREW SPRING TRAP			D.S.CAT. NO. 5305-005003	

CR 16

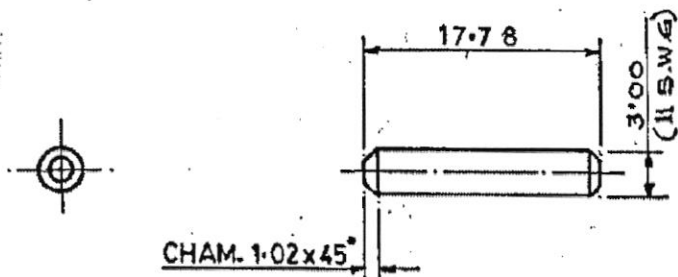
727100-9185 ON

1/3'S'0 DIMNS.ARE IN mm.

FOR EXPLANATION OF DIMENSIONING ETC.,SEE
D.D. NOTE SHEET NO. 3 (LATEST ISSUE)

NOTE

FOR SPECN. LATEST ISSUE SHOULD BE FOLLOWED.



UNCONTROLLED COPY
CERTIFIED CORRECT COPY OF APPROVED
DRAWINGS AT THIS DATE: 12/11/24.

DESIGN & DRAWING OFFICE,
ORDNANCE FACTORY, TIRUCHIRAPPALLI - 620 014

METRIC

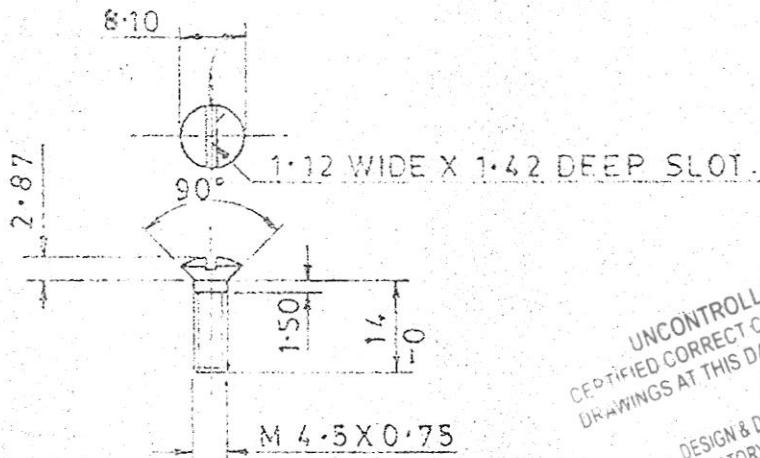
NSN: B1/5315-72-0001774

ICR 1335

02-09-16	26927-SA	MATERIAL AMENDED.		
03-06-10	26509-SA	NSN ADDED		
18-03-98	24061-SA	PROFORMA CHANGED, NEG. RE-TRACED AND DRG. RE-SEALED		
		P PREVIOUS DC.NOS. 10448-SA, 10669-SA, 10672-SA, 11001-SA, 11267-SA, 15580-SA, 17933-SA, 19686-SA, 19727-SA, 21937-SA & 23193-SA		COPY
DATE	AUTHY.	BRIEF RECORD	ZONE	I/C;D.O. G.O.
SEALED:- D.C. NO. 10448-SA DT.13.4.70.			SIGN.	
DRN.	CHD.	TRD. <i>skelsh</i>	COMP. <i>Amulya</i>	AHSP CQA(SA), ICHAPUR
SCALE:- 2:1		EST. MASS.		
DT. 18-3-98	<i>Amulya</i> I/C;D.O.	APPROVED DT. 19.6.67. NEG. RE-TRACED		ASSY. 1005-001669
MATERIAL :- IS:7887-1992 Grade 8M OR 9.				
H.T./HARDNESS :-			DGNR'S REF. CIA/WPN/224/2	
PROTECTIVE, PHOSPHATE TO SPECN. JSS:0465.01-1988 CLASS 1 FINISH :- OIL FINISH OR ALTERNATIVELY ZINC PLATING TO SPECN. IS:1573 Gr. 'C' TYPE 2.			PART NO.	
NOMENCLATURE :- PIN TRAP			DRG. NO.	
			D.S. CAT. NO. 5315-001774	

0900-9089

FOR EXPLANATION OF DIMENSIONING ETC. SEE ARDE NOTE SHT-1
 DIMNS. ARE IN mm.



UNCONTROLLED COPY
 CERTIFIED CORRECT COPY APPROVED
 DRAWINGS AT THIS DATE: 12/11/24
 DESIGN & DRAWING OFFICE,
 PERFORMANCE FACTORY, TIRUCHIRAPPALLI-620 016.

NOTE :-

FOR SPECN. LATEST ISSUE SHOULD BE FOLLOWED.

METRIC

10/11

10.2.2001

04.05.17	27067-SA	MATL. AMENDED	12.08.17		
08-04-99	24319-SA	PROFORMA CHANGED, NEG. RE - TRACED & DNG. RE-SEALED.		And	Beings
		PREVIOUS D.C. NOS. 10945-SA, 11011-SA, 11238-SA, 135746-SA, 16289-SA, 17281-SA, 19321-SA, 21975-SA & 22652-SA.		COPY	COPY
DATE	AUTHY.	BRIEF RECORD		ZONE	I/C; D.O. G.O.
SEALED:- D.C. 10945-SA, DT. 26.7.71				SIGN:	
DRN.	CHD.	TRD. Sharda	COMP. Nambeni	AHSP. CQA(SA), ICHAPUR	
SCALE :- 1:1		EST. MASS.		ASSY. CISA/359, 1005-004057, 1005-004025, 1005-004059	
DT. 08-4-99	And I/C; D.O.	APPROVED. DT. 19.7.71 NEG. RE-TRACED			
MATERIAL :-		BS: 970 Pt. 1 SEC. 2 Ctr. 070 M 20 IS: 513-2008 DESIGN CR2			
H.T./HARDNESS				DGNR'S CIA/WPN 541 REF. 2-SHTS. SHT-1	
PROTECTIVE FINISH.		PHOSPHATE TO SPECN. JSS: 0455-01:1988 CLASS-II (ACCELERATED), OIL FINISH.		PART NO.	
NOMENCLATURE :-		SCREW		DRG. NO.	
		10/11		D.S. CAT. NO. 5305-005009	